



**JOYCE 82' MOTORYACHT, DELIVERED F.O.B TAIWAN**

FOR 5 CABINS

**TECHNICAL DATA**

- LENGTH OVERALL 82'
- BEAM OVERALL 19'
- DRAFT 4'1"
- WEIGHT approx. 61 T
- NUMBER OF BERTHS 8 + CREW
- FUEL TANK CAPACITY 1,000 US GALS
- WATER CAPACITY 300 US GALS
- CERTIFIKATION A

**SPECIFICATION**

- ENGINES (TWIN) CAT 1450 HP

**HULL – DECK CONSTRUCTION**

- V-SHAPED KEEL WITH LONGITUDINAL STRINGERS
- FIBREGLASS HAND LAID MOLDED HULL
- FOAM CORE SANDWICH DECK CONSTRUCTION
- TEAK DECKS ON MAIN DECK AND SWIM PLATFORM

**HULL AND DECK HARDWARE**

- HANDRAILS, CLEATS AND FITTINGS MADE OF STAINLESS STEEL 316
- HANDRAIL SIZE 1-1/4"
- SS GATES TO SWIM PLATFORM
- 10" CLEATS (NON POP-UP) TO SWIM PLATFORM

- ANCHOR LOCKER C/W TEAK HATCH
- BULWARK OPENING ON PORT SIDE ONLY
- STAINLESS STEEL ANCHOR (50 kg)
- 300 FEET OF ANCHOR CHAIN
- CHAIN STRIPPER WITH CHAIN STOP
- SUNBED CUSHIONS
- 4 BLADE BRONZE PROPS
- MAXWELL 12/24V ANCHOR WINDLASS TO SUIT WITH REMOTE OPERATION FROM FLYBRIDGE
- BUILT IN SHOWER WITH HOT AND COLD WATER ABOVE SWIM PLATFORM
- DUAL CHROME PLATED ELECTRICAL HORNS
- SS FOLDING SWIM LADDER INCORPORATED IN BATHING PLATFORM
- CUSTOM FUBREGLOSS STAIRS WITH TEAK TREADS FROM AFT DECK TO FLYBRIDGE
- DECK WASH DOWN SYSTEM WITH OUTLETS FORE, AFT AND FLYBRIDGE
- CANTALUPI LED STEP LIGHTS
- AFT WATERTIGHT DOOR TO TRANSOM
- SEARCH LIGHT
- AFT DECK TABLE IN TEAK

## **ENGINE ROOM AND EQUIPMENT**

- TWIN DIESEL ENGINES CAT 1450 HP
- HYDRAULIC GEARBOXES
- FRESH WATER COOLED ENGINES
- OIL STORAGE TANK
- RACOR FUEL FILTER AND WATER SEPARATOR FOR EACH ENGINE
- HEAVY DUTY STAINLESS STEEL SHAFTS ( 3"-1/4 )
- BRONZE STRUTS
- ALUMINIUM FLOOR PLATES BETWEEN THE ENGINES
- ALUMINIUM FUELTANKS
- STEEL CHANNELS BONDED TO HULL ENGINE BEDS FOR ENGINE LOAD DISTRIBUTION
- ENGINE ALARM SYSTEM FOR LOW OIL PRESSURE AND HIGH TEMPERATURE
- TWIN ENGINE COMPARTMENT BLOWERS
- ENGINE ROOM VENTILATION VIA CUSTOM SIDE AIR INTAKE CHANNELS
- 12 VOLT LIGHTING AND 220 VOLT POWER RECEPTACLES
- INDEPENDENT CUSTOM STRAIGHT LINE EXHAUSTS
- EXTRA INSULATION

## **AIR CONDITIONING – HEATING SYSTEM**

- AIRCONDITIONING THROUGHOUT AS PER UPGRADED STD SPEC (97kBTU) (MARINE AIR )
- ONE ONAN 17.5 KW & ONE ONAN 13.5 GENSETS w/ SOUNDSHIELDS
- AUTOMATIC BATTERY CHARGER
- 20 GALLON WATER HEATER
- WATER PRESSURE PUMPS WITH PRESSURE TANK
- LARGE CAPACITY HOLDING TANK FOR HEADS WITH INDICATOR AT HELMSTATION

- FRESH WATER FITTING FOR FILLING ENGINE AND GENERATOR EXPANSION TANKS
- SOUND AND HEAT INSULATED MATERIAL
- SP HYDRAULIC BOWTHRUSTER
- SP HYDRAULIC STERN THRUSTER

## **ELECTICAL SYSTEMS**

- 220 VOLT/50 HZ ELECTRICAL SUPPLY FROM GENERATOR OR SHORE
- 12/24 VOLT LIGHTS THROUGHOUT
- NAVIGATION LIGHTS 12/24 VOLT
- SECURITY AC PROTECTION SWITCHING
- FLOAT SWITCHING FOR BILGE SYSTEM
- BOAT INDICATOR PANEL
- AC/DC LIGHT TRANSFORMER (PCS)
- 8 X 200 AMP/HR BATTERIES FOR ENGINE AND SHIP POWER
- SEPARATE 120 AMP/HR STARTING BATTERIES FOR GENERATORS
- ENCLOSED ACID PROOF FIBREGLASS BATTERY BOXES WITH COVERS
- MAIN ELECTRIC LOCKER PANEL INCLUDES AC POWER, WITH ALL SECURITY SWITCHES
- 12/24 VOLT DC MONITORING AND MAIN CIRCUIT BREAKER PANEL
- INDIRECT LIGHTING UNDER VALANCES IN SALON, STATEROOMS, PILOTHOUSE
- HALOGEN SPOTLAMPS AND INDIRECT SAFETY LIGHTING IN STAIRWAYS
- HIGH QUALITY SOCKETS AND SWITCHES
- 2 X MAXWELL CAPSTAN WINCHES
- 5 HEAVY DUTY AUTOMATIC BILGE PUMPS

## **STEERING SYSTEM**

- HYDRAULIC
- EMERGENCY TILLER
- STAINLESS STEEL RUDDERS
- TRIM TABS W/HYNAUTIC RAMS

## **PLUMBING**

- STAINLESS STEEL WATERTANKS
- 125 GALLON HOLDING TANK WITH INDICATOR
- MACERATOR PUMP
- Y VALVE FOR DOCKSIDE PUMP OUT
- SUMP PUMP
- SEALAND VACUUM TOILETS 506 EXCEPT CREW CABIN

## **FLY BRIDGE**

- NON-SKID DECK ON FLYBRIDGE
- DESIGN AS PER LAYOUT
- SECOND HELM STATION WITH COMPLETE ENGINE INSTRUMENTATION, MAGNETIC COMPASS, RUDDER ANGLE INDICATOR, AND HORN
- VHF – SECOND STATION
- BBQ GRILL & 2 RING HOB
- RADIO/CD 12V w/ WATERPROOF SPEAKERS
- CONTROL SWITCHES

- AUTOPILOT REPEATER
- COMPLETE NAVIGATION ELECTRONICS PACKAGE (SEE BOTTOM)
- HYDRAULIC POWER STEERING
- HELMSMAN SEATING AS LAYOUT
- PASSENGER SEATING WITH FIBREGLASS TABLE
- ALL CONTROLS AND GAUGES
- HEAVY DUTY LEXAN WINDSHIELD IN STAINLESS STEEL FRAME Std RADAR ARCH IN FIBREGLASS
- LEXAN ACCESS HATCH TO AFT DECK
- BAR WITH SINK AND REFRIGERATOR (NORCOLD EV351) 1,100 INTEGRATED LIGHTING UNDER THE FLYBRIDGE ARCH
- NAVIGATION LAMPS
- INTERCOM

## **PILOT HOUSE**

- INTERIOR AS PER LAYOUT
- MODERN CONSOLE WITH COMPLETE MOTOR INSTRUMENTS, COMPASS, VHF RADIO, RUDDER ANGLE INDICATOR AND CONTROL SWITCHES
- AUTOPILOT
- VHF – DUAL STATION
- SOUNDER & SPEED LOG DUAL SYSTEM
- WINDSHIELD WIPERS AND WASHERS
- HELM SEAT (MANUAL)
- SIDE EXIT DOOR (STB SIDE )
- HYDRAULIC POWER STEERING
- WATER TANK GAUGES
- TEAK AND HOLLY CABIN SOLE
- NAVIGATION ELECTRONIC PACKAGE (SEE BOTTOM)

## **SALOON AND DINING AREA**

- RECESSED TYPE ALCANTARA CEILING WITH LIGHTING
- WALL PANELLING IN WOOD VENEER OR ALCANTARA
- FURNITURE IN CHOICE OF WOOD FINISHES, SATIN OR HIGH GLOSS
- BAR WITH GLASS AND BOTTLE STORAGE
- ICE MAKER RARITAN SS45
- SIDE AND AFT WINDOW CURTAINS FROM YARD SAMPLE BOOKS
- MANUAL SS AFT DECK DOOR TO SALOON – FULL WIDTH
- TINTED GLASS FOR WINDOWS AND AFT DECK SALOON DOOR
- DINING TABLE AND CHAIRS
- SALOON OCCASIONAL TABLES
- TEAK AND HOLLY CABIN SOLE

## **GALLEY**

- WALL CABINETS IN WOOD OR FORMICA FINISH
- STANDARD VINYL CEILING
- BLANCO DOUBLE SINK WITH GRANITE WORK SURFACES

- GROHE EUROPLUS FAUCET
- CERAMIC TILE FLOOR OR TEAK AND HOLLY CABIN SOLE
- DISHWASHER
- CERAMIC COOKTOP WITH MICROWAVE / OVEN
- CUSTOM FRIDGE FREEZER UNIT IN LIEU OF STD

## **MASTER AND GUEST-CABIN**

- DESIGN AS PER LAYOUT
- ALCANTARA CEILING WITH INSET LIGHTING
- WALLS AND FURNITURE IN CHOICE OF WOOD FINISHES, LEATHER OR ALCANTARA
- CURTAIN & BEDDING FABRICS FROM STANDARD YARD SAMPLE BOOKS
- NIGHT STANDS; PORT AND STARBOARD
- MATTRESSES
- FLAT SCREEN TV RECESSES WITH CONDUIT
- RADIO/CD C/W SPEAKERS 12V
- TWO READING LAMPS
- WARDROBE WITH LIGHT; DRAWERS FOR STORAGE
- MIRROR HEAD BOARD OVER BED
- CURTAINS
- TEAK AND HOLLY CABIN SOLE

## **MASTER AND GUEST BATHROOM**

- DESIGN AS PER LAYOUT
- SEALAND VACUUM TOILET 506
- COMFORTABLE SIZE SHOWER &/OR BATH
- GROHE EUROPLUS FAUCETS
- MARBLED COUNTER TOPS WITH WASH BASIN
- MIRRORED CABINETS
- CURTAINS
- TOWEL BAR AND SOAP DISH
- EXTRACTOR FAN
- CERAMIC TILE FLOOR OR TEAK AND HOLLY CABIN SOLE OR CORIAN
- INTERCOM

## **CREW QUARTERS AND BATHROOM**

- DESIGN AS PER LAYOUT
- MATTRESSES
- TEAK AND HOLLY CABIN SOLE
- ELECTRIC TOILET
- SHOWER AND WASHBASIN
- CURTAINS
- EXTRACTOR FAN
- HELM CONSOLE HEADBOARDS & BED SURROUNDS

## **EXTERIOR**

- SUNBED CUSHIONS ( VINYL AS FACTORY SAMPLE BOOK )
- ALL FIBREGLASS AND STAINLESS STEEL EXTERIOR AS PER LAYOUT
- DOCKSIDE WATER INLET
- SOFA WITH CUSHIONING ON AFT DECK
- SUNBED CUSHIONS AND COVERS

## **OTHER STANDARD EQUIPMENT**

- BIG PORTLIGHT ON BOTH SIDE FOR MASTER CABIN
- WASHER DRYER
- ULTRA SUEDE CEILING THROUGHOUT BOAT
- CAMPHOR WOOD OR SIMILAR QUALITY
- LEATHER COVERS SALOON SOFAS, STOOLS, DINING SOFAS/ CHAIRS, HELM SEATS, HELM CONSOLE, HEADBOARDS & BED SURROUNDS
- INTERCOM 7 STATIONS
- BOTTOM PAINTED WITH 3 LAYERS INTERNATIONAL X GELSHIELD
- ZINC ANODES
- SHORE CONNECTION CABLES x 2
- HARBOUR SEATRIAL – KOAHSIUNG
- RADIO/CD W/(2) SPEAKERS 12V IN F/B AND MASTER AND VIP
- RAYMARINE 10" COLOR LCD MONITOR PLOTTER, FINDER, RADAR AND CHART NAVIGATION FURUNO FAX-30 INCLUDING: RECEIVER UNIT FAX30, ANTENNA 04S4176 INSTALLATION MATERIALS AND SPARE PARTS INCULDING PC ADAPTOR FOR FLYBRIDGE, RAYMARINE 7" COLOR LCD MONITOR PLOTTER, FINDER, RADAR AND CHART NAVIGATION
- OPACMA UP- DOWN SWIMPLATFORM W/600KG LIFT POWER

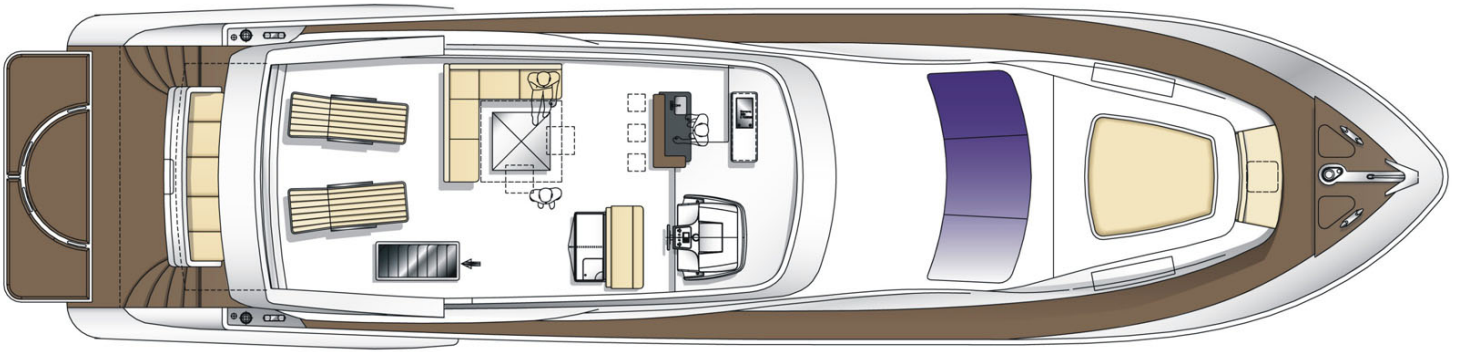
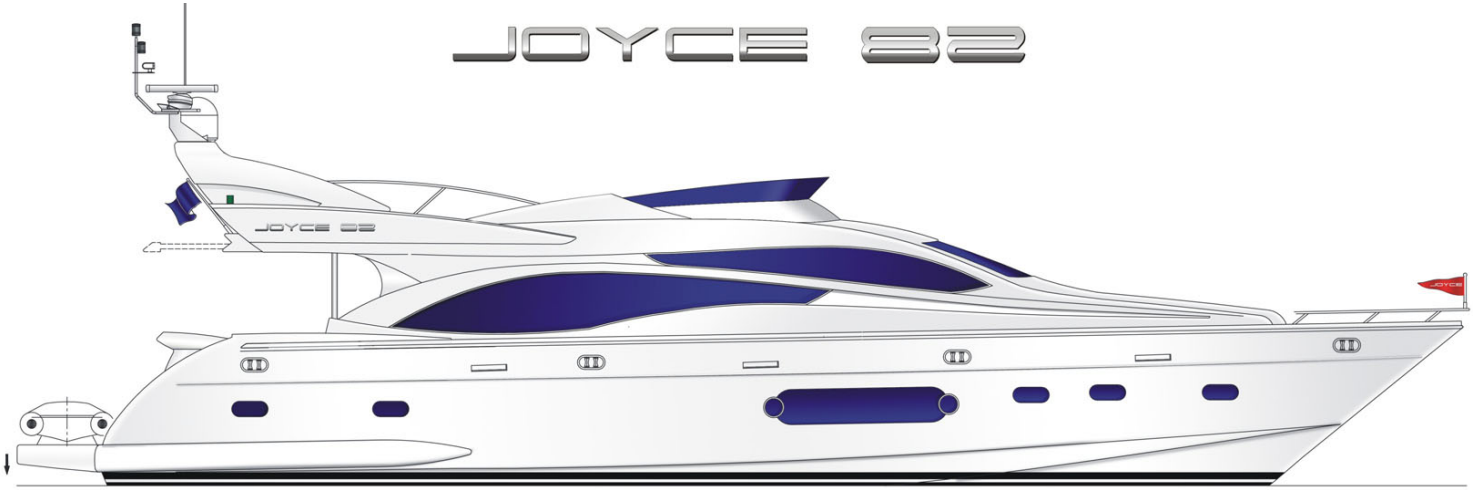
## **F.O.B TAIWAN**

.....  
Joyce Chuang, President Joyce Marine Ltd.

### **Disclaimer**

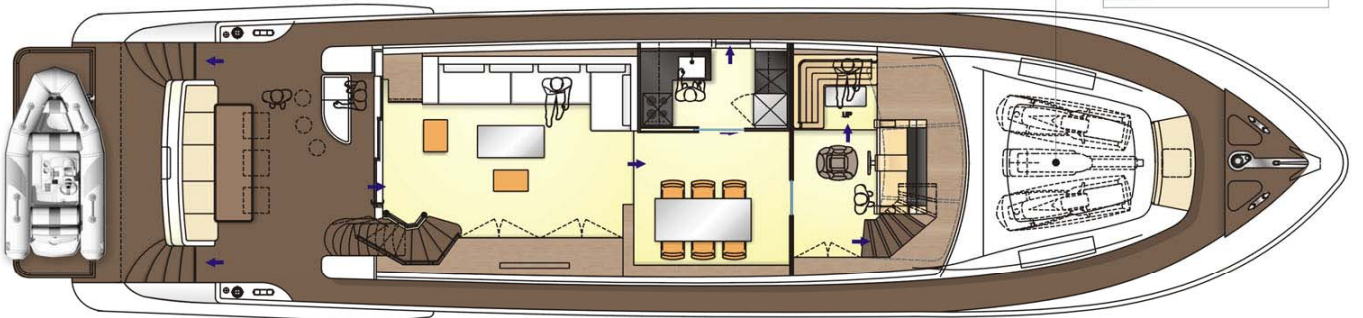
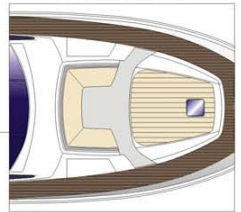
The company offers the details of this vessel in good faith but cannot guarantee or warrant the accuracy of this information nor warrant the condition of the vessel. The buyer should instruct his agents or surveyors, to investigate such details as the buyer desires validated. This vessel is offered subject to prior sale, price change or withdrawal without notice.

# JOYCE 82

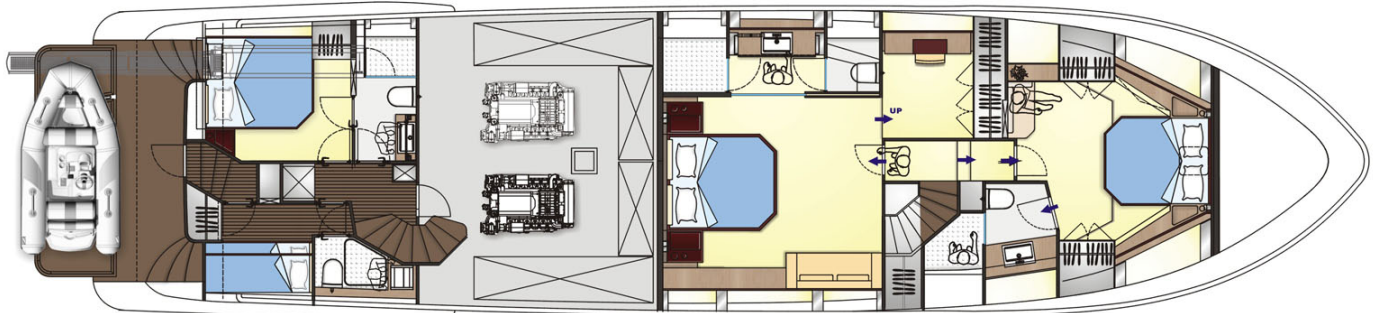


# JOYCE 82

STANDARD



LOWER DECK 4 CABINS



12 11 10 9 8 7 6 5 4 3 2 1 0 -1 -2

0m 0.8m 2m  
0.2m 1m

JOYCE MARINE